

NEXTENERGY SOLAR FUND

ESG introduction December 2022



Speakers & contents



Ross Grier
Managing Director, UK,
NextEnergy Capital



Giulia Guidi
Head of ESG,
NextEnergy Capital



David Hawkins
Vice President of ESG,
NextEnergy Capital



Peter Hamid
Investor Relations,
NextEnergy Capital



Hing Kin Lee
Environmental Impact
Manager, NextEnergy Capital

- NextEnergy Group p.3
- Financial highlights p.4
- Portfolio p.5
- Portfolio growth & pipeline p.6
- ESG p.7
- Biodiversity p.17
- Going forward p.20
- Q&A / Appendix p.21



Value add of NextEnergy Group

NextEnergy Group

NEXTEnergy CAPITAL

Investment Management

- C.\$3.0bn Solar AUM
- Over 330 solar assets acquired
- 1,300MW+ operating portfolio across UK, Italy, US, Portugal, Spain, Chile, Poland and India

WISE ENERGY

Asset Management

- 1,350+ solar assets managed and/or monitored
- 1.8 GW+ installed capacity under management
- Present in Europe, Americas, Africa and Asia

STARLIGHT

Development

- Green and brownfield project development across geographies
- Over 100 utility-scale projects developed internationally
- Current pipeline c.8.7GW under development

NextSTEP A NextEnergy Group Company

Incubator

- Targeting startups focused on sustainability and environmental technologies
- In partnership with the leading sustainability accelerator programme VeniSIA
- NextEnergy Group to provide initial €3m funding

NEXTEnergy FOUNDATION

Foundation

- International charity founded in 2016
- Participate proactively to reduce carbon emissions, provide clean power, and contribute to poverty alleviation
- NextEnergy Group donates 5% of its yearly profits to NEF

Key financial highlights, as at 30 September 2022

- **+9.4p** (c.8.3%) increase in NAV per ordinary share during the 6 months
- **+£56.2m** increase in ordinary shareholders' NAV during the 6 months
- Interim dividend of **1.88p** per ordinary share for the quarter ended 30 September 2022

Ordinary Shareholders' NAV

£724.7m

(31 March 2022: £668.5m)

NAV per ordinary share

122.9p

(31 March 2022: 113.5p)

Gross Asset Value

£1,258m

(31 March 2022: £1,150m)

Total gearing¹

42%

(31 March 2022: 42%)

FY22/23 Estimated dividend cover

1.3x-1.5x

FY22/23 Target dividend

7.52p

Footnote:

(1) Total gearing is the aggregate of financial debt, look through debt and £200m of preference shares. The preference shares are equivalent to non-amortising debt with repayment in shares

NESF portfolio

Individual Operating Solar Assets

99

Commitment to NextPower III ESG⁽¹⁾

\$50m

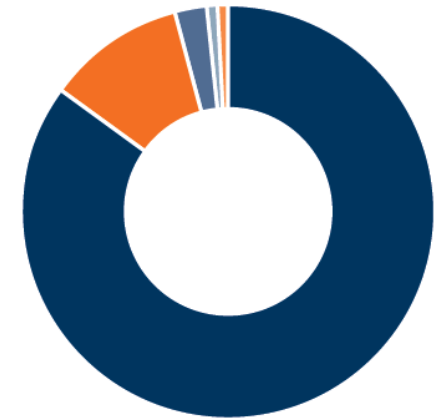
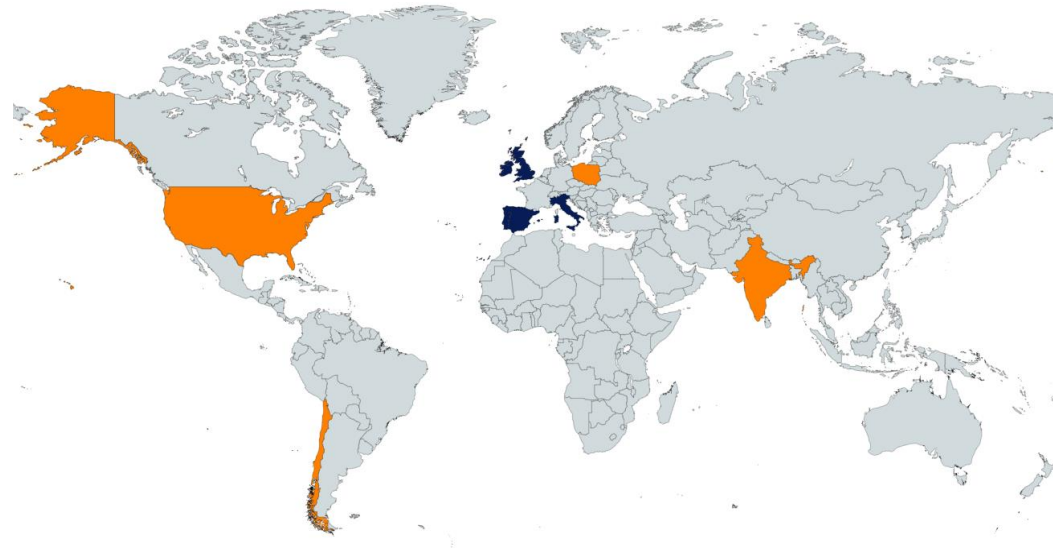
Installed capacity (excluding NextPower III)

865MW

Weighted average asset life

27.0 years

Portfolio Map



% of invested capital

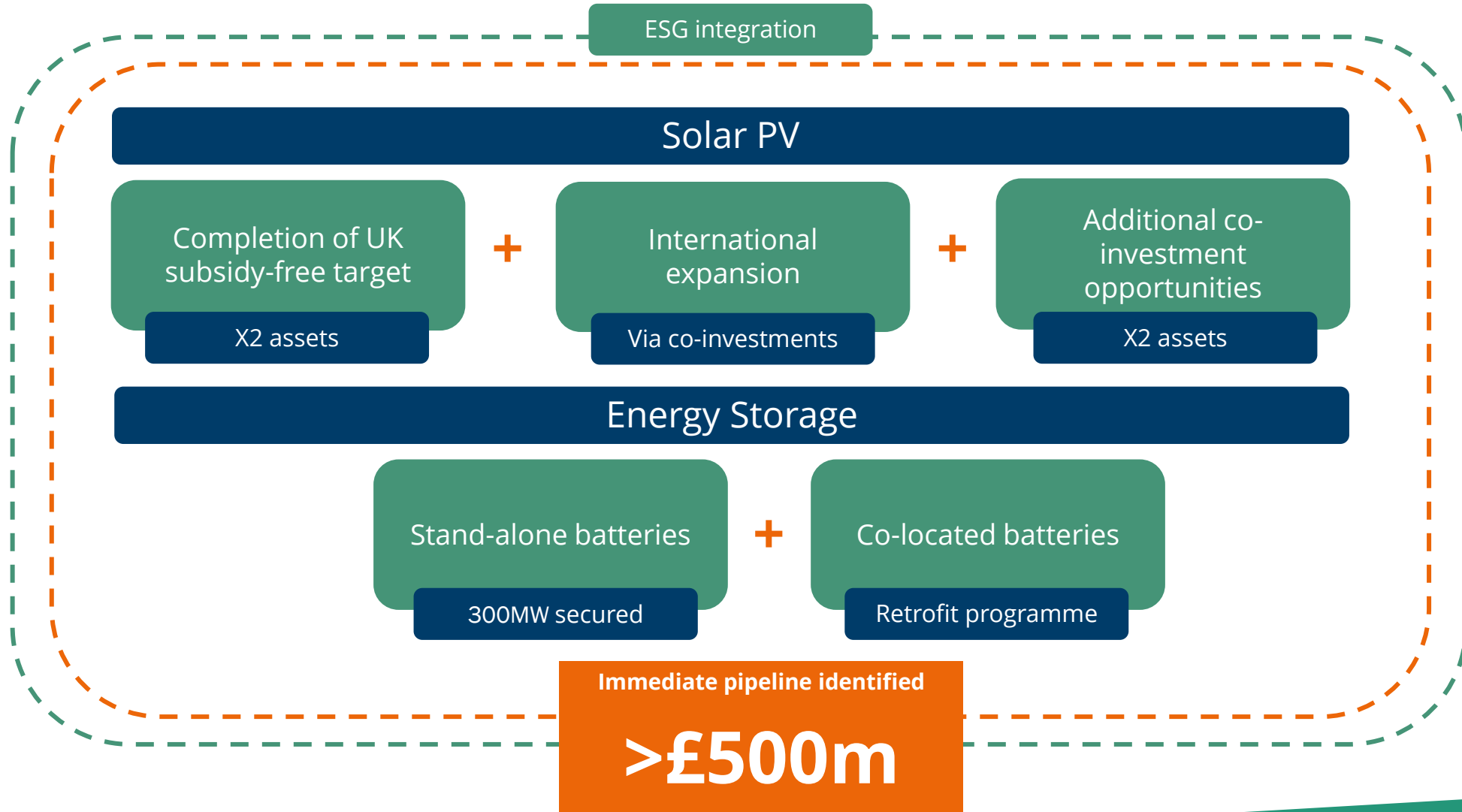
- Direct asset ownership and co-investments
- Via NextPower III ESG commitment

- 85.1% UK
- 10.8% Italy
- 1.7% Other International (NextPower III ESG)
- 0.9% Spain
- 0.6% Portugal

Footnote:
(1) NextPower III ESG = NP III

Portfolio growth & pipeline

- Pursue international Solar PV and UK energy storage immediate pipeline
- Provides NAV-accretive growth opportunities
- Add diversification benefits from a geographic, asset, technology and revenues perspective
- Strengthen dividend cover and enhance returns



Footnote:
 Gross Asset Value (GAV) investment policy limits:

- 10% of GAV into Standalone Energy Storage
- 15% of GAV into Solar Private Equity structure
- 30% of GAV into International OECD Solar Assets

An impact ESG investment

- NESF is classified as **Article 9 fund** under EU SFDR and Taxonomy
- Establishment of ESG Board Committee, chaired by Josephine Bush, Non-Executive Director of NESF
- Released first dedicated standalone ESG report in November 2022

| NextEnergy Solar Fund – Green Impact Data Track Record | | | | | | | | | | |
|--|-----------------------|--------|--------|--------|--------|--------|--------|--------|--------|--------|
| Metric | Units | FY2015 | FY2016 | FY2017 | FY2018 | FY2019 | FY2020 | FY2021 | FY2022 | HY2023 |
| GHG avoided | ktCO ₂ e | 30.6 | 110.0 | 191.4 | 211.2 | 299.4 | 307.7 | 317.6 | 328.7 | 266.5 |
| NOx avoided | tonnes | 41.3 | 108.3 | 176.3 | 193.1 | 276.5 | 274.4 | 283.4 | 296.3 | 241.5 |
| Sox avoided | tonnes | 94.1 | 214.4 | 335.8 | 365.9 | 499.2 | 511.9 | 527.5 | 549.7 | 444.5 |
| PM _{2,5} | tonnes | 2.4 | 8.4 | 14.5 | 15.9 | 22.6 | 23.2 | 24.0 | 25.2 | 20.8 |
| PM ₁₀ | tonnes | 0.9 | 2.3 | 3.7 | 4.0 | 5.6 | 5.8 | 5.9 | 6.2 | 5.1 |
| Fossil Fuels avoided | tonnes oil equivalent | 13.0 | 46.9 | 81.6 | 90.0 | 127.7 | 131.2 | 135.9 | 142.8 | 117.8 |
| | million barrels | 0.10 | 0.34 | 0.60 | 0.66 | 0.94 | 0.96 | 1.00 | 1.05 | 0.9 |

NESF ktCO₂e avoided since IPO²

2,063

Equivalent UK homes powered during the half year to 30 September 2022

354,274

(30 September 2021: 299,000)

Tonnes of CO₂e emissions avoided during the half year to 30 September 2022

266,500

(30 September 2021: 229,000)

Clean electricity generated during the half year to 30 September 2022

639GWh

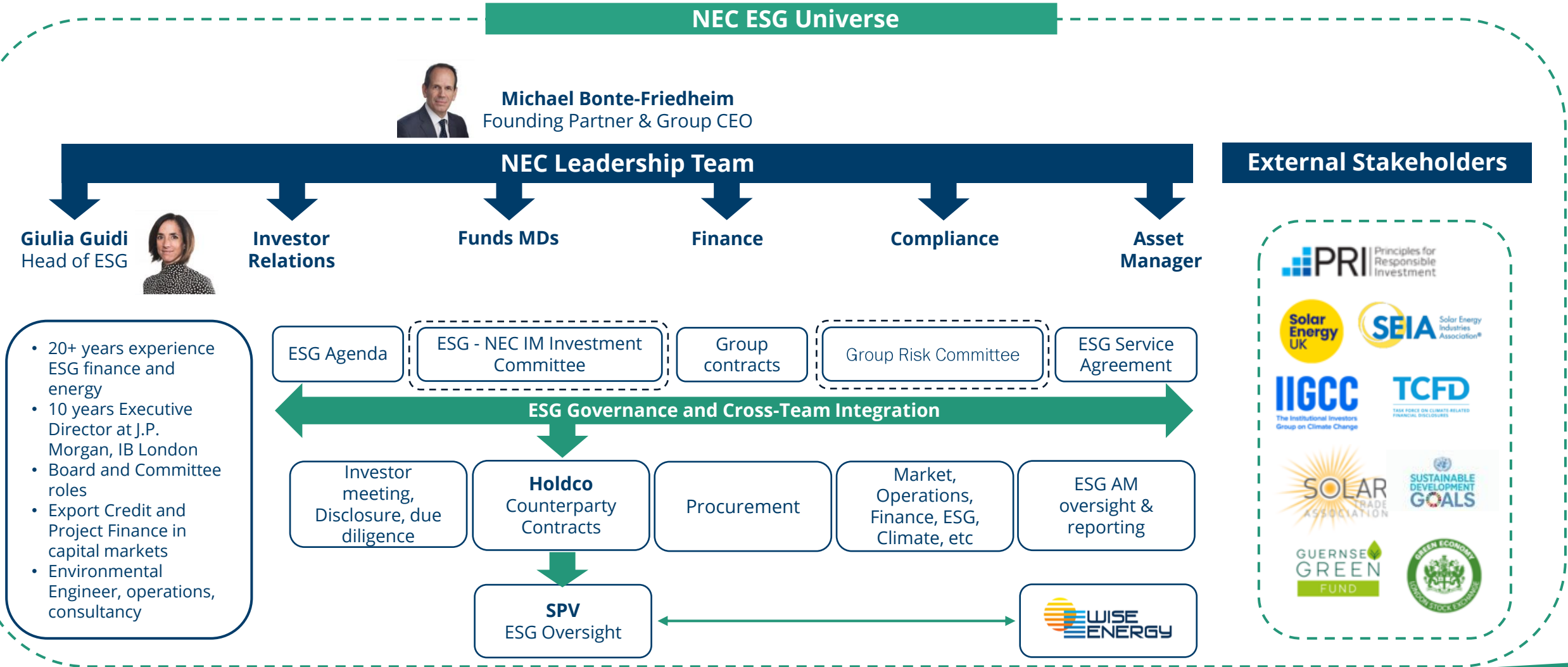
(30 September 2021: 539GWh)



Footnotes:

- 1) GHG emissions data provided by Green Investment Group calculated using their Green Impact methodology based on information provided by NextEnergy Capital for the period ending 30 September 2022
- 2) Estimations provided by Green Investment Group using an annual average figure of the entire portfolio's (operational and pre-operational projects) GHG emissions of NESF based on the portfolio's forecast renewable electricity generation

NextEnergy Capital ESG governance



- 20+ years experience ESG finance and energy
- 10 years Executive Director at J.P. Morgan, IB London
- Board and Committee roles
- Export Credit and Project Finance in capital markets
- Environmental Engineer, operations, consultancy

Policies and statements

- In 2018 NEC adopted a **Sustainable Investment Policy** based on the Principles for Responsible Investment (UN PRI)
- The Policy outlines the principles, excluded activities, integration, engagement, reporting and governance processes related to Environmental, Social and Governance (ESG) matters
- The Policy is supplemented by **Position Statements** on climate change, human rights, and biodiversity (to be released Q4 2022/Q1 2023) which provide further insights into our approach to the fundamental aspects of its sustainability framework
- NESF benefits from NEC's dedicated **Supplier Code of Conduct** which sets out contractual obligations for all suppliers
- NEC has a **dedicated ESG team** that is responsible for the implementation of the ESG policy across NESF
 - Team expansion- to 6 members by end of Q1 2023 and potentially a seventh member later in the year
- NESF **Article 9 disclosures** have been completed and can be found on the NESF website



CLIMATE CHANGE

NESF's actively participates in climate change mitigation by contributing towards a zero carbon and sustainable future through the generation of clean electricity. To learn more about our commitment to tackling climate change, please read our Position Statement.



BIODIVERSITY

At NESF, solar goes beyond just providing a clean, renewable energy source. Solar presents a unique opportunity to enhance and protect local biodiversity. We actively promote biodiversity across our portfolio of sites, including wild flower meadow planting, building bug hotels, engaging with bee-keeping communities and planting nesting habitats.



HUMAN RIGHTS

NESF commitment to HR is guided by the United Nations Declaration of Human Rights, as well as the UN Guiding Principles on Business and HR, and it is aligned with the requirements of the UK Modern Slavery Act.

NESF sustainability framework

NESF adopts NEC's Sustainability Framework

- As detailed in our Sustainability Policy and NESF Sustainability Report, our approach is based on three key pillars:



- ESG risks and opportunities relevant to our operations are captured within these pillars
- We also consider our contribution to the **UN Sustainable Development Goals (SDGs)** and report our interaction/contribution to them in an annual SDG report release
- We are further improving on this approach by process mapping all current and future ESG inputs in relation to key project decision stage gates, and capturing this within an **"end-to-end process flow"**



ESG integration into the NESF investment process

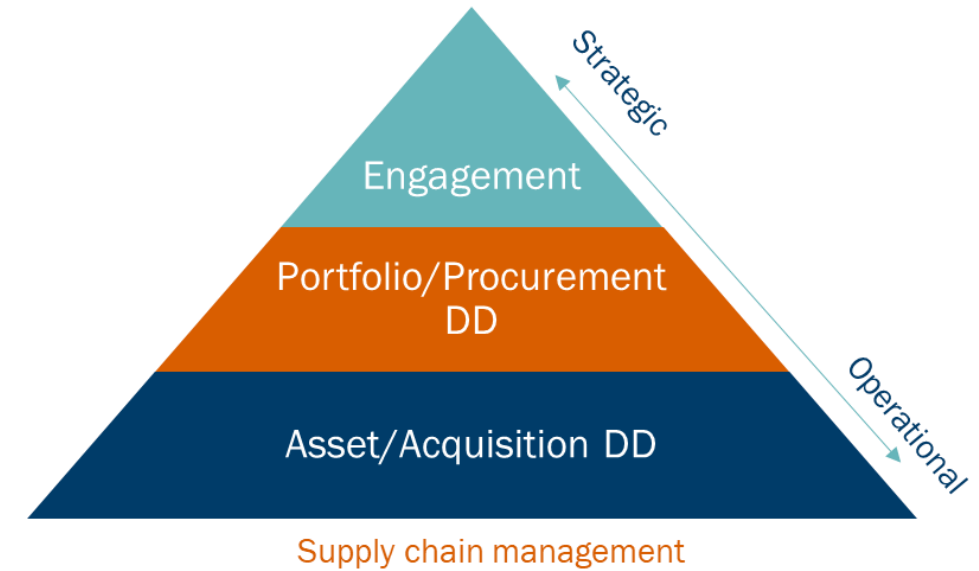
- ESG factors are considered **throughout the investment process**, from potential excluded activities during the project selection phase, to initial screening and full due diligence during the pre-acquisition phase
 - We are further formalising this process by creating an **end-to-end ESG process flow map** to demonstrate and capture our integration in a governing process
- ESG clauses are included in key contracts** with our counterparties, including EPC and O&M contractors, and an action Plan to fill in any gaps between a project, its contractors and the standards which NEC seeks to uphold is agreed during the negotiation phase
- NEC ensure that the action plan is implemented**, and that NESF report on its ESG performance
- Please see the NEC sustainable investment policy on the website for more details: nextenergycapital.com/sustainability/sustainable-investing/



Supply chain management

There are various ESG material considerations throughout the Supply Chain

- **Supply Chain Management** is an integral part of NESF's robust risk management
- NESF is **committed to preventing modern slavery in its own activities** and those related to its business relationships, including its supply chain.
- NESF's approach to supply chain management is two-fold:
 - on going risk management (due diligence at asset and portfolio level- recently enhanced for supplier scoring purposes) and
 - an extensive **stakeholder engagement** process
- NESF's risk management approach is very effective with tier 1 suppliers; however, NEC cannot always get transparent and verifiable information from tier 2, and tier 3 suppliers, e.g., those who extract or process raw materials.
- NEC's Head of ESG has been **appointed as Chair of the Solar Energy UK task force on responsible sourcing**. Together with Solar Power Europe, the group has recently launched the **Solar Stewardship Initiative**.



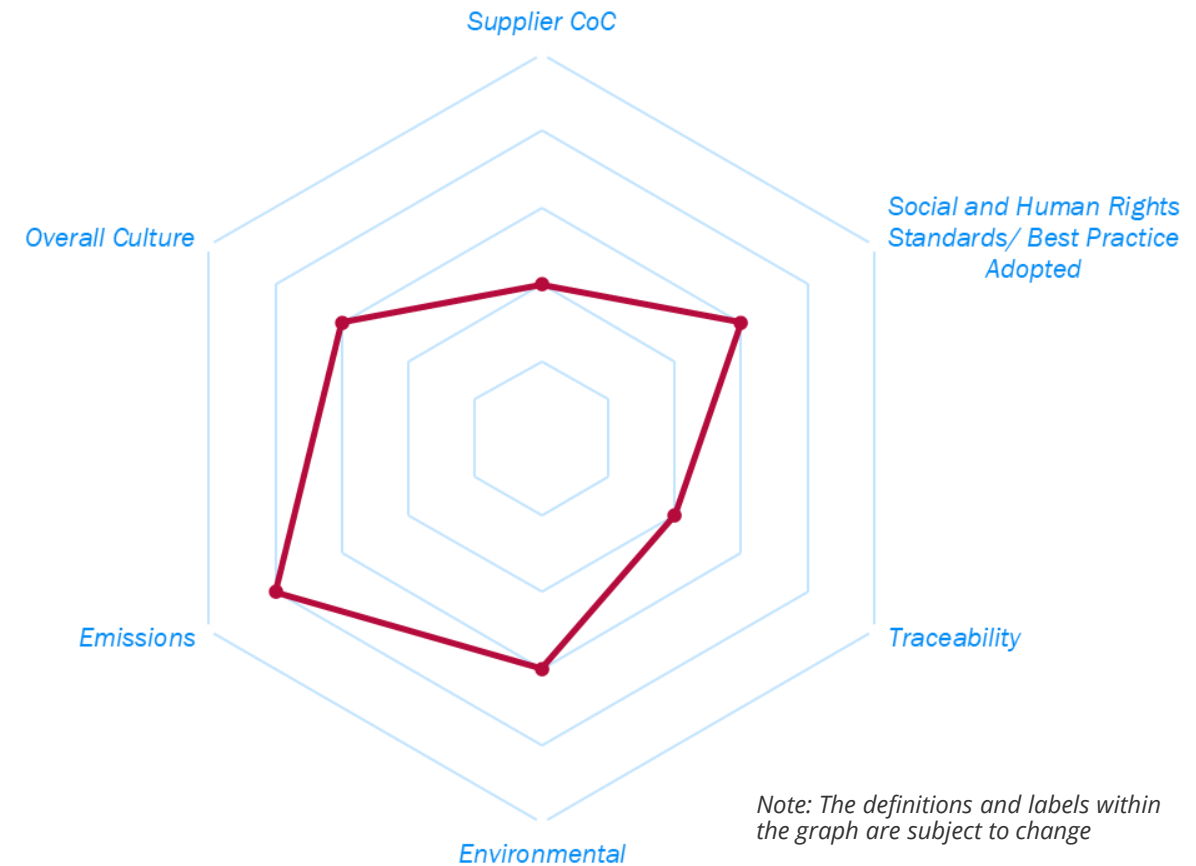
Supply chain management, enhanced supplier review

- NEC's expectations are used as a basis for NESF's supplier review/scoring process. See below for a few examples of key areas we look at:
 - **Social standards adopted**
 - **The standard of Supplier CoC and evidence available**
 - **The level of traceability the supplier can provide**
 - **The emissions of the supplier and their products**
 - **Environmental standards adopted**
 - **The supplier sustainability culture**

Note: Our internal review of suppliers considers the quartz/metallic silicon level in the supply chain throughout all subjects

Suppliers with transparency at these levels are highly received in the scoring process

Example of Internal Supplier Sustainability Review Mapping (WIP)



Industry-level engagement: Solar Stewardship Initiative

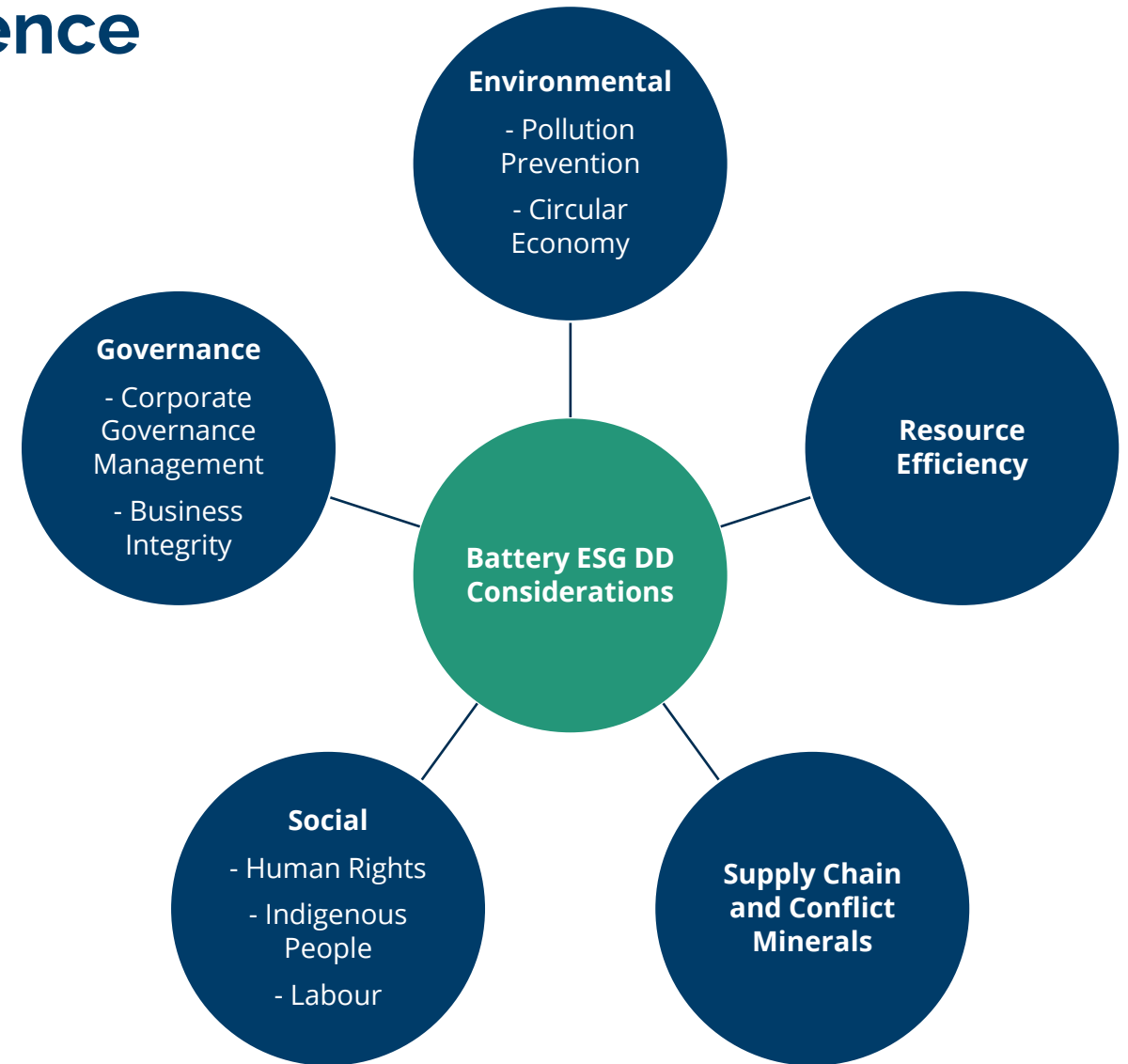
- **Solar Energy UK** and **Solar Power Europe** have worked together last year to establish and run a joint working group on the **Solar Stewardship Initiative** and solar supply chain transparency.
- What is the Solar Stewardship Initiative?
 - A solar-specific supply chain assurance programme that will develop confidence **in how, where, and by whom**, solar products are manufactured.
 - The program will establish **end-to-end supply chain transparency**, ensure the integrity and resilience of the global solar industry, and establish a 'chain of custody' system for product traceability.
 - The SSI presents its **Roadmap**, the **Code of Conduct** (consultation period), the **Assurance System**, and a Pilot programme with the selected suppliers.
- Want to know more and get in touch with the initiative?
<https://solarstewardshipinitiative.org/contact/>



A note on battery ESG due diligence

How do we approach battery and storage projects?

- **Due diligence:** We have a dedicated ESG DD checklist and question list for when we develop or acquire assets with battery/energy storage requirements (see radial diagram to the right)
- **Compliance:** We seek to ensure compliance with applicable regulations such as OECD due diligence guidance for responsible mineral chains and UN Guiding Principles on Business and Human Rights
- **Green inputs:** We are investigating how to obtain green inputs to our battery facilities that are from suppliers that are both economically viable and large enough to meet demand
- **Audits:** We plan to adopt third party audits and chain of custody approach that is being considered through Solar Stewardship Initiative to promote industry-wide traceability



Climate strategy & emissions approach

NESF is currently in the process of developing a Net Zero and Climate Approach

- Our plan of approach can be seen below and is **influenced by the UK TPT, ISSB Global Baselines, TCFD**, and many other initiatives and examples of best practice.



As part of this approach:



- We will be **mapping our Scope 1, 2, and 3 emissions** to develop a baseline, along with reviewing abatement possibilities in the supply chain and identifying offsetting requirements.
- We will **set identify priorities** and **set reduction targets and objectives**.
- We will **develop an action plan** which will lay out the areas we need to focus on, the methodologies of approach, and the short, medium, and long-term goals. This allows for more granular disclosures.
- We will also **define the approach to assure and report on our metrics** and associated deliverables.

Biodiversity at NextEnergy Solar Fund

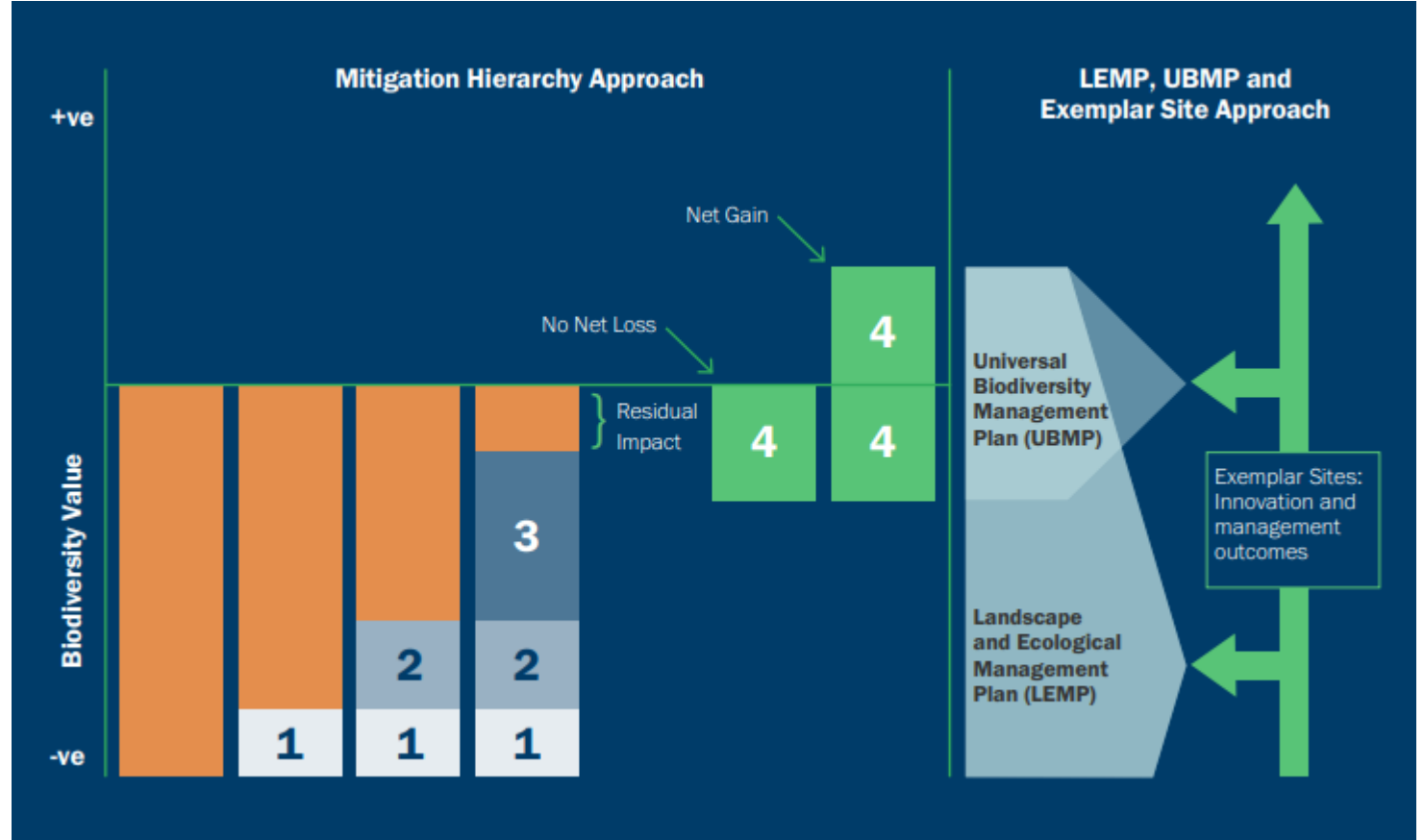
- Biodiversity and natural capital are **critical to our business and integral to our mission to generate a more sustainable future** by leading the transition to clean energy.



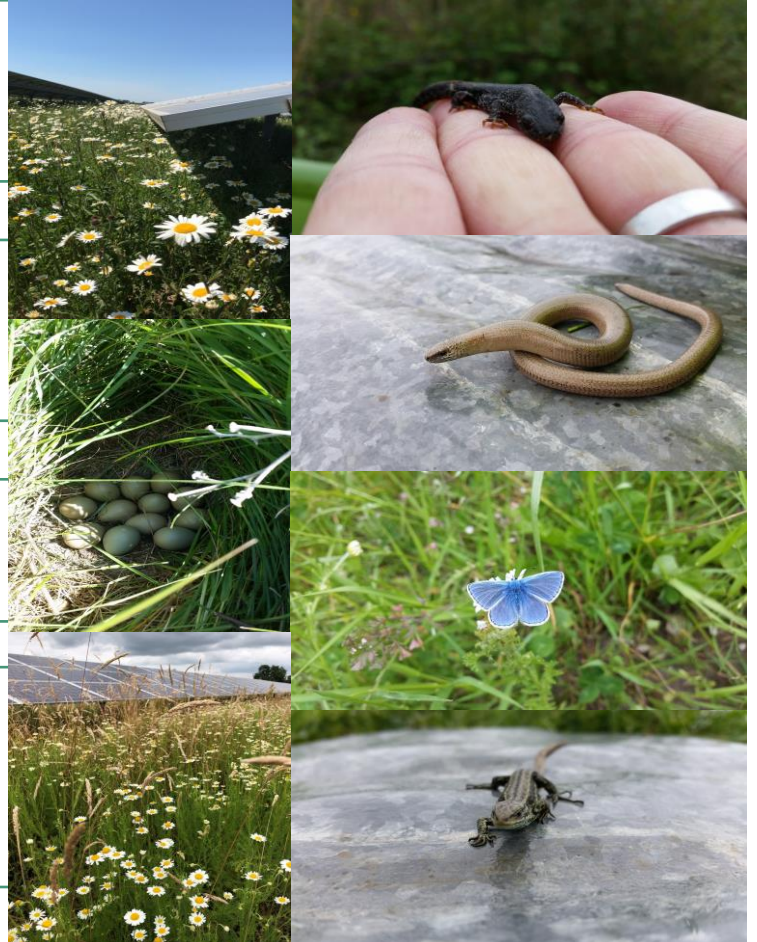
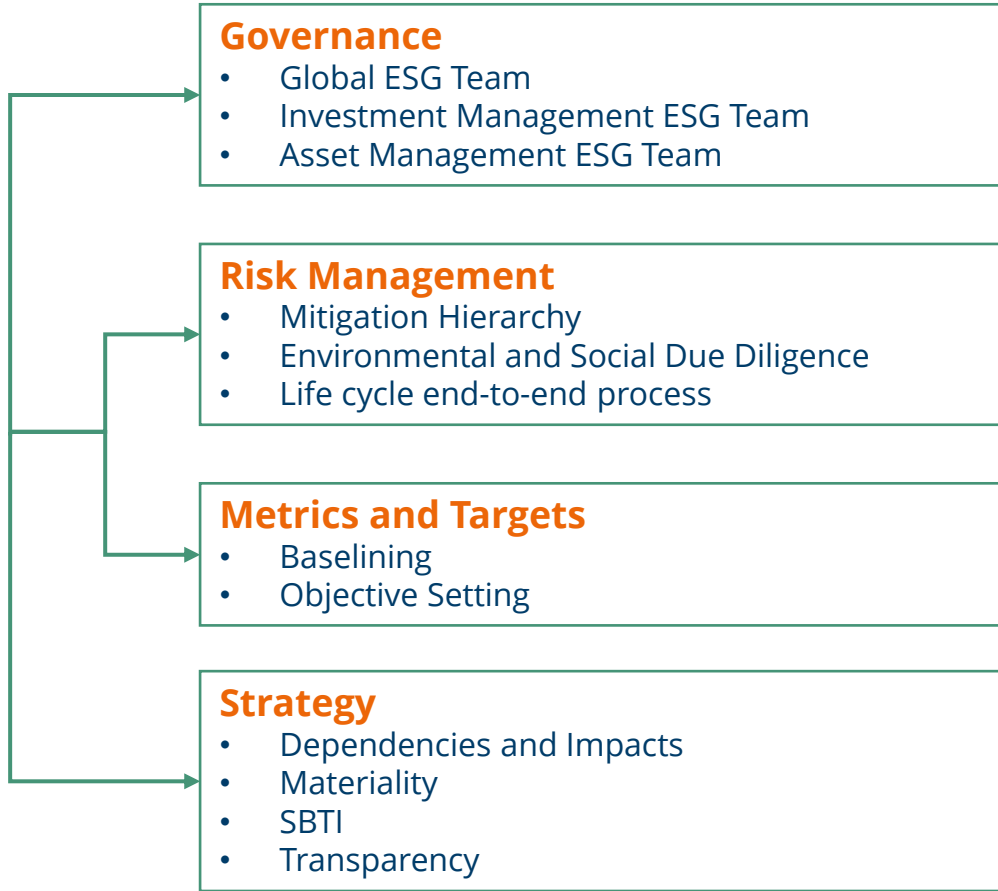
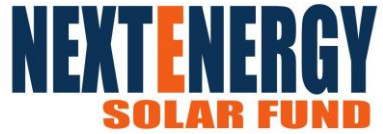
Biodiversity methodology and data

- NESF understands the **potential to achieve Biodiversity Net Gain** on our sites and our ambition is to quantify this across our operational assets as well as our pipeline
- Our approach to assessment and governance is **underpinned by the mitigation hierarchy approach**, where avoidance is the first and most important step to prevent harm to biodiversity of greatest conservation concern.
- Offsetting is only pursued as a last step in the mitigation hierarchy.

- = Biodiversity Impact
- 1** = Avoidance
- 2** = Minimisation
- 3** = On-site restoration
- 4** = Offset



Biodiversity going forward



Going forward - Summary

Provide enhanced governance through the new NESF ESG committee

Deliver Net Zero and Climate Strategy

Adopt the Science Based Target initiative (SBTi) approach

Maintain Article 9 EU SFDR status

Deliver annual NESF sustainability report

Report tangible biodiversity metrics showcasing biodiversity net gain

Continue the enhanced review/scoring approach of the supply chain



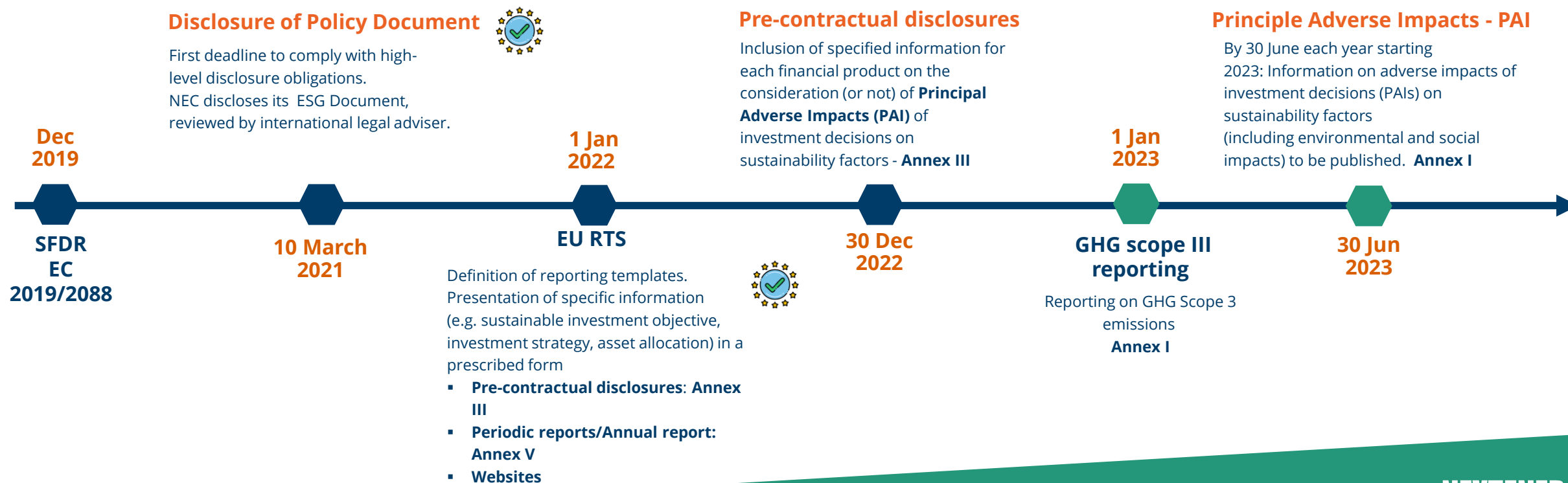


Q&A / Appendix



EU Sustainable Finance Regulation and Taxonomy

- NEC's funds, including NESF, are classified under SFDR and Taxonomy Article 9 (funds with a sustainability objective - climate mitigation)
- NESF has disclosed Annex III and V in July 2022, ahead of expected timeline
- NEC continues to work with an external law firm on achieving compliance with future EU Taxonomy and SFDR obligations
- Key challenges will be gathering meaningful data on GHG scope 3 emissions from our various contractors and supply chain



Climate strategy & emissions approach

Net Zero and Climate Strategy – Roadmap

We are developing our Net Zero and Climate Strategy which will enable us to define our objectives and key metrics in governing documents.

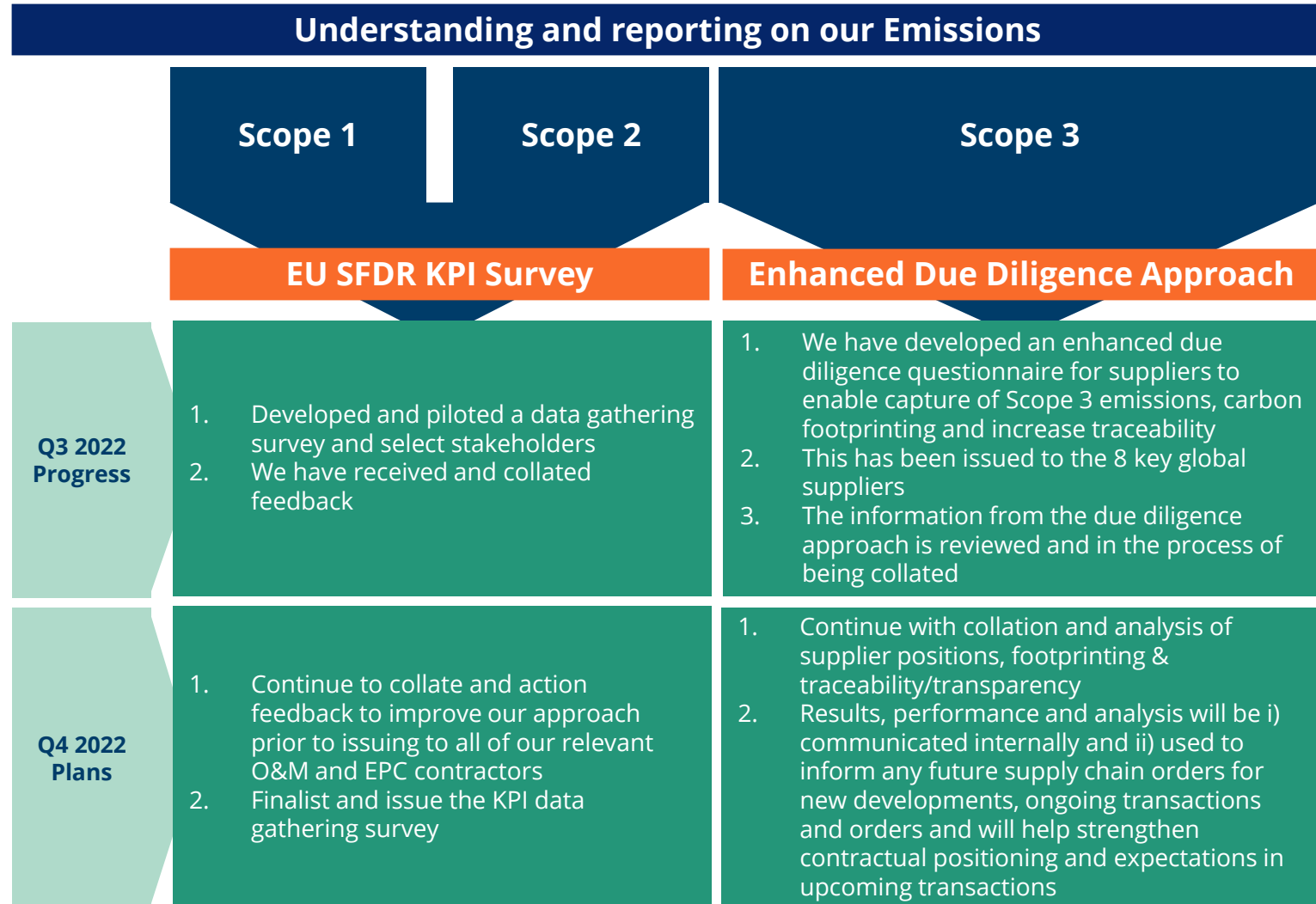
Key deliverables for Q1/2 2023:

- **Net Zero and Climate Strategy Document**
- **Climate Position Statement Update**
- **Delivery Roadmap**

We are currently evaluating the adoption of the **Science Based Target initiative (SBTi) approach**.

- Early stage, evaluating risk and opportunities to adopt SBTi
- Internationally recognised and provide a standardised approach to developing climate related metrics and reporting against those metrics
- Update following Q1/Q2 2023

We are also currently reviewing the possibility to becoming a **signatory to the Net Zero Asset Managers Initiative**.



Above and Beyond Operational Excellence: Biodiversity

- For NEC, solar presents a key opportunity to create a web of protected biodiversity hubs throughout the world
- NEC does not knowingly invest in solar plants where there is evidence of impacts on areas with high biodiversity value, using the external Integrated Biodiversity Assessment Tool to verify this
- NEC has worked with a specialist biodiversity consulting group, Wychwood, to develop a strategy expected to deliver biodiversity net gain across its entire UK portfolio
- NEC is committed towards the UK Government's 25-Year Environment Plan

- NEC has to date surveyed 10 sites and selected 6 exemplar sites for surveys on invertebrates, botany and breeding birds
- Site specific measures can be found at the Exemplar sites, including bird, bat and owl boxes, wildflowers, bug hotels and hibernacula to provide a habitat for the native wildlife
- In addition, a Universal Biodiversity Management Plan ("UBMP") has been put together with the objective of implementing universal biodiversity measures across all UK sites
- There are a total 30 sites part of the UBMP where the following measures are implemented: bird and bat boxes, wildflowers, hibernacula and bug hotels and nectar rich shrubs (only on 15 sites)
- Across the NESF UK portfolio 40 sites have conservation sheep grazing to limit mechanical cuttings
- Sulwen Vaughan, NEC Portfolio Manager and SPV Director, is chair of Natural Capital group at Solar Energy UK; the working group are actively working on a best practice guide for the UK solar industry

Chamomile grown at Emberton in-between panel rows; 20 jars were collected for tea

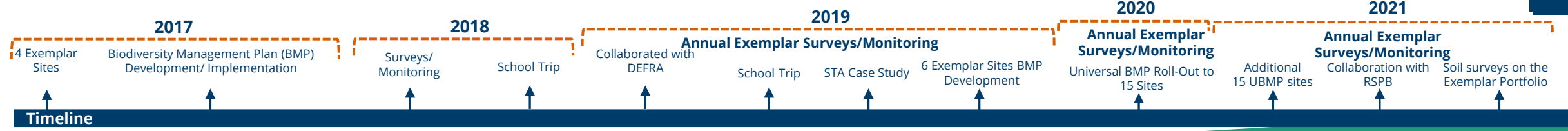
Beehives located at Boxted, Essex, and solar beehives located at Berwick, East Sussex. NEC is working with the local Beekeepers Association to deploy hives at 5 other sites within the NESF portfolio

Langenhoe supported RSPB 'Operation Turtle Dove'; supplementary feed was introduced in 2021
NEC added a further 15 UBMP sites with universal measures contributing to biodiversity net gain

A hibernacula at Boxted Solar Farm, built with locally sourced materials

Grazing to promote natural low carbon land management

NEC Exemplar & Biodiversity Management Plan Sites

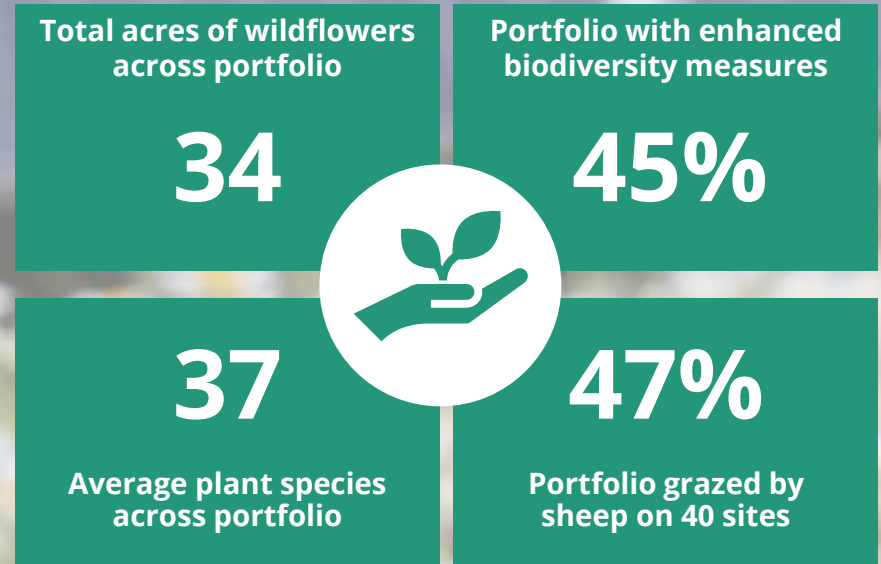


Biodiversity enhancement

- **NESF benefits from a dedicated Biodiversity team** to ensure that land management and native fauna and flora are being considered throughout the investment and ownership phases.

Biodiversity looking forward

- ✓ Continue to **implement best practice biodiversity measures** across the NESF portfolio
- ✓ **Enhance local biodiversity** in the surrounding areas where we operate
- ✓ Roll out extension of exemplar site program to cover over **50%** of **the** portfolio before year-end
- ✓ Target positive biodiversity net gain at our solar sites



Social enhancement

- **Community Engagement** is essential to raise awareness of the benefits that solar assets can bring. Connecting with local communities in ways that are mutually beneficial is integral to NESF's ESG approach.

Enhanced community engagement

- ✓ **20 solar sites** are **promoting educational visits** alongside Earth Energy Education, in 2023. Aiming to improve links with the local communities and supporting students with their curriculum studies
- ✓ Working with **BizGive**, a business community giving technology platform, to help NESF run a **community giving pilot** based on NESF's UN Sustainable Development Goals criteria
- ✓ **Helping engage the local community**, whilst promoting local skills and employment



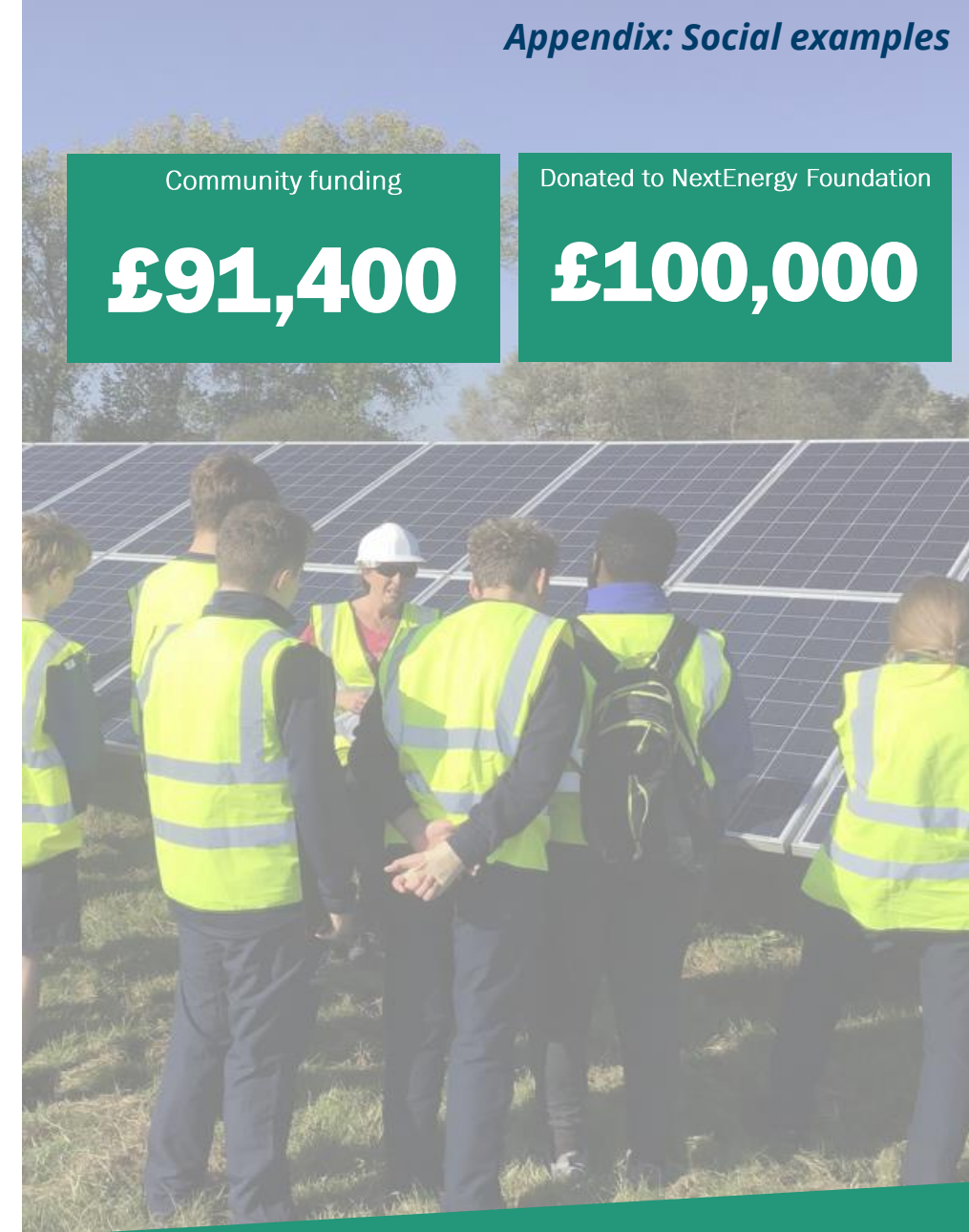
- **The NextEnergy Foundation (NEF)** is an international charity set up in 2016. Its mission focuses on supporting global efforts to reduce carbon emissions, provide clean power sources in hard-to-reach locations, and alleviate poverty.

Community funding

£91,400

Donated to NextEnergy Foundation

£100,000



Community Engagement - Examples

- NEC commits to employ people locally, where practical and possible
- Community funds are established to promote development and support community renewable energy projects and initiatives
- We also commit to using our solar farms as educational opportunities, particularly regarding the promotion of the value of biodiversity and clean energy



NEC Group team members assisting local school teachers during the field study



Education

Sir John Leman High School and Ellough Solar Farm

- A donation of £1,892 was made to Sir John Leman High School which was put towards the school updating the performance hall lights

Outdoor Classroom and Birch CIC Solar Farm

- The community of Messing in Essex is located near Birch CIC solar farm and were looking to build an outdoor classroom; they received a donation from Birch CIC to facilitate this. The team is working with Messing Parish this year to install a pathway to allow access and inclusivity, this will be made of sustainably sourced materials and is expected to be completed by summer 2022

School Visit to Berwick Solar Farm

- Over 2 days 270 pupils visited Berwick solar farm from a local senior school in order to carry out a geography field study, this occurred both in 2018 and 2019



Outdoor classroom in its final form and below being enjoyed by the local community



Homelessness

Oxford and Hill Solar Farm

- Donation to Greater Change to accommodate and train homeless people in Oxford back into work

Chichester and Bilsham Solar Farm

- Donation to Greater Change to accommodate and train homeless people in Chichester back into work



Ongoing Commitments

- The NEC community team are actively engaging with the parishes that have annual donations obligations to gain a better understanding of where the money is spent and to help provide advice on how to use the donation and make a difference, e.g:

Charlton Marshall Parish Council and North Farm

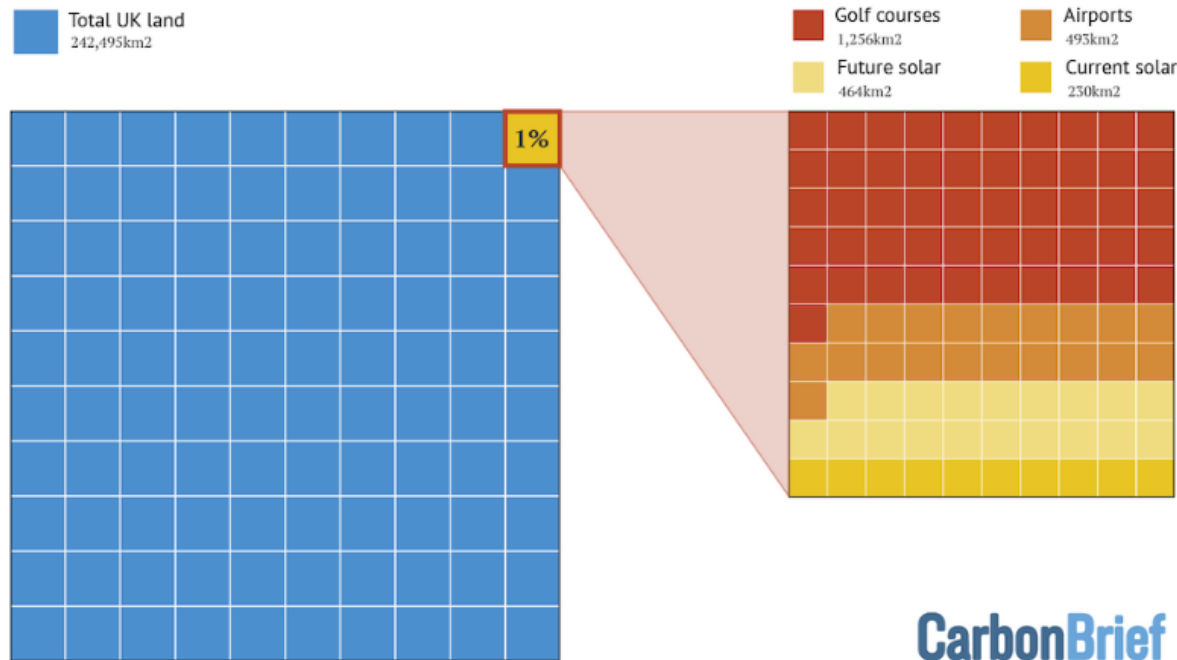
- Over the years They have used their community benefit agreement donations to provide the community with computer equipment for the village hall, camping equipment to the local scout's club and football posts for the community playing field

Solar vs UK Farm Land

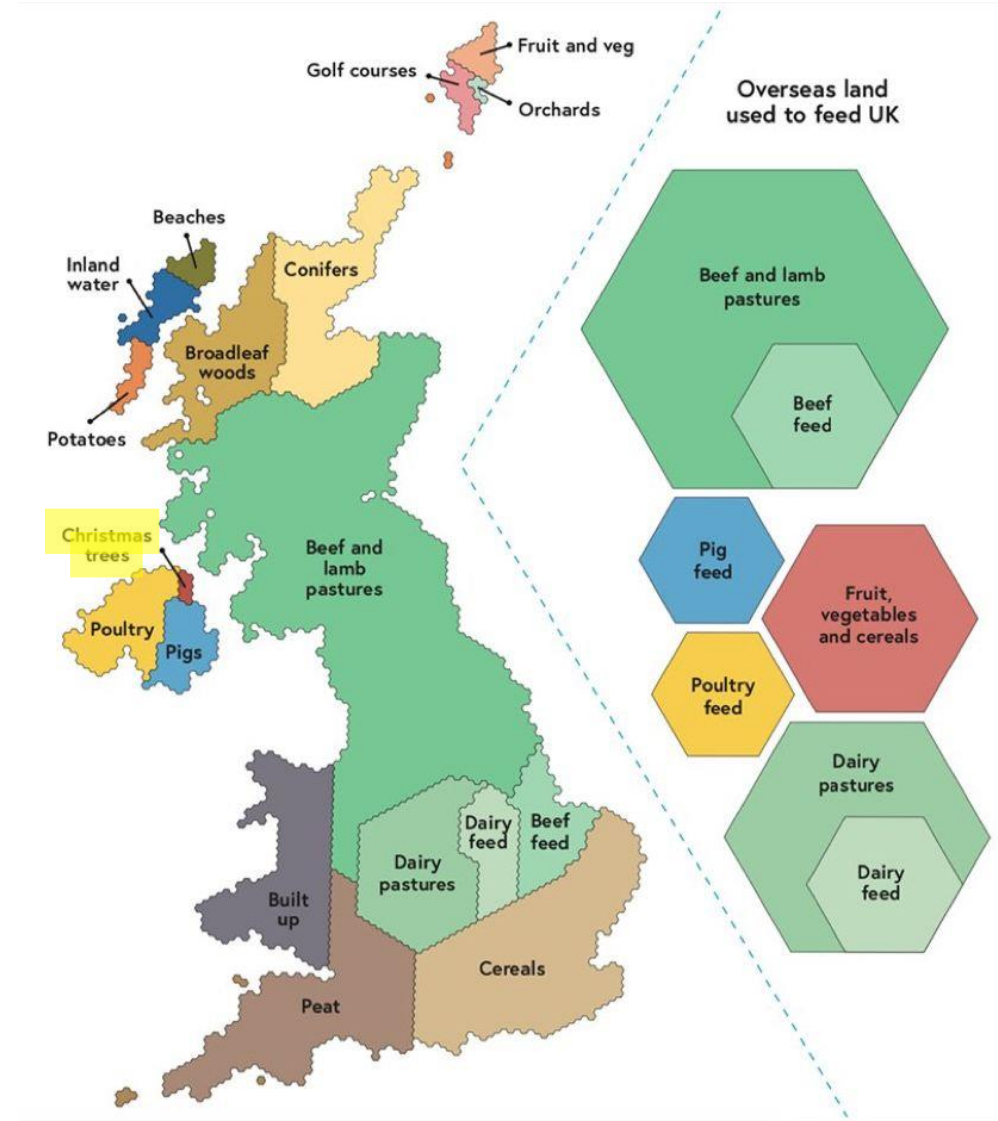
- Solar power currently covers less than **0.1%** of UK land
- Golf courses take up **more space** than solar power in the UK
- The UK uses **more land** to grow Christmas trees than used by solar

Solar vs UK land use

Current and future solar power land use compared to other uses



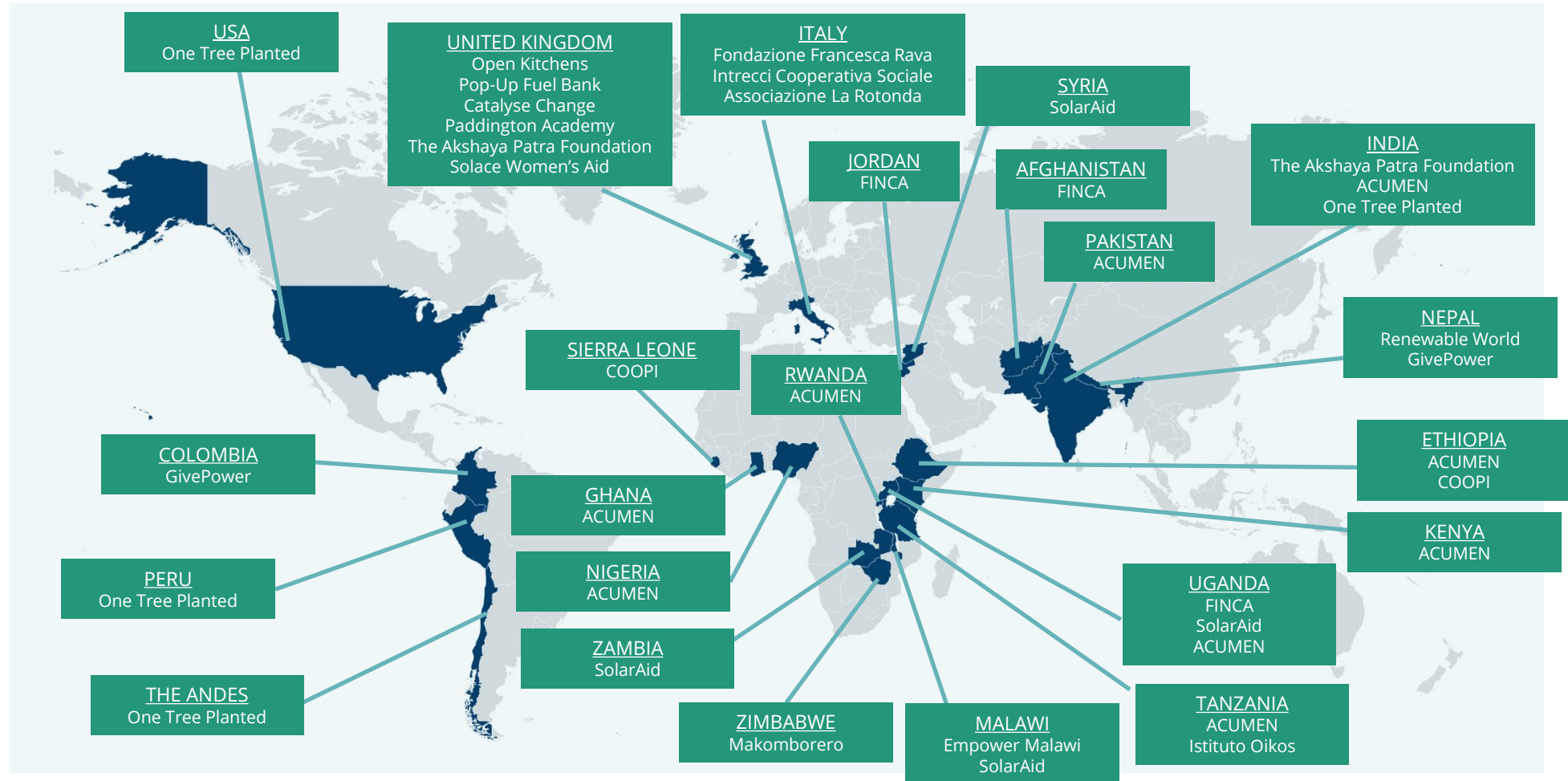
CarbonBrief
CLEAR ON CLIMATE



The NextEnergy Foundation



- Founded in 2016, the Foundation's mission is to alleviate poverty through the nexus with clean energy access and emissions reductions
- NESF's investment adviser, NextEnergy Capital, donates at least 5% of its net annual profits to the NextEnergy Foundation
- To date, the Foundation has contributed over **£666,409** in donations to projects supporting renewable energy and sustainable development initiatives



Values



BE A LEADER



BUILD TRUST



BE RESPONSIBLE



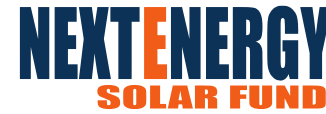
BRING YOUR ALPHA



BE AN INNOVATOR

- **Be A Leader:** Being a leader isn't a position or a rank, it's a mindset. We want everyone, no matter what part they play, to realise their leadership potential.
- **Build Trust:** Trusted relationships are the foundation of a positively challenging environment where everyone can contribute to their full potential. We want trust to be at the heart of our company, to fuel the creation of brilliant teams, strong partnerships, and long-term performance.
- **Be Responsible:** Generating clean energy for the planet is a responsibility we are privileged to hold. To preserve this privilege we need to hold ourselves and each other to the highest ethical and social standards, because managing others' capital and assets demands nothing less of us.
- **Bring Your Alpha:** Our track record of creating incremental value by outperforming the market is what sets our company apart. We thrive in a competitive environment and need everyone to bring their α game to work, do their best work and make sure no stone is left unturned in identifying value.
- **Be An Innovator:** Staying at the forefront of our industry requires a relentless focus on challenging and improving every single aspect of what we do in order to continuously generate incremental value. We want everyone to come to work with bold ideas and new perspectives to change things for the better.

NextEnergy Solar Fund board of directors



Kevin Lyon

Chairman

- >30 years' of experience in fund management, investment banking and private equity and is Chairman of NextEnergy Solar Fund



Patrick Firth

Non-executive Director

- >30 years' experience advising management companies, general partners and investment companies and is Chairman of the Audit Committee



Jo Peacegood

Non-executive Director

- >20 years' of experience in the investment management sector with a specific focus on listed funds, private equity and third-party service providers



Vic Holmes

Senior Independent Director

- >30 years' experience in financial services industry. He is a FCCA, a Senior Independent Director and Chairman of the Nomination Committee



Josephine Bush

Non-executive Director

- >14 years' experience specialising in the renewable energy sector. She is a qualified solicitor and chartered tax adviser

NextEnergy Capital investment committee



Michael Bonte-Friedheim

Founding Partner and Group
CEO of NextEnergy Group



Giulia Guidi

Head of Environmental, Social
and Governance (ESG) at
NextEnergy Capital



Ross Grier

UK Managing Director at
NextEnergy Capital



Aldo Beolchini

Managing Partner and Chief
Investment Officer of
NextEnergy Group

NextEnergy Capital Investment Management board of directors



Joseph D'Mello

- > 30 years' of experience as a chartered accountant. As Director of Fund Management at NextEnergy Capital Ltd, Joseph is responsible for fund reporting, valuation, as well as tax structuring and legal aspects of funds



Jeremy Thompson

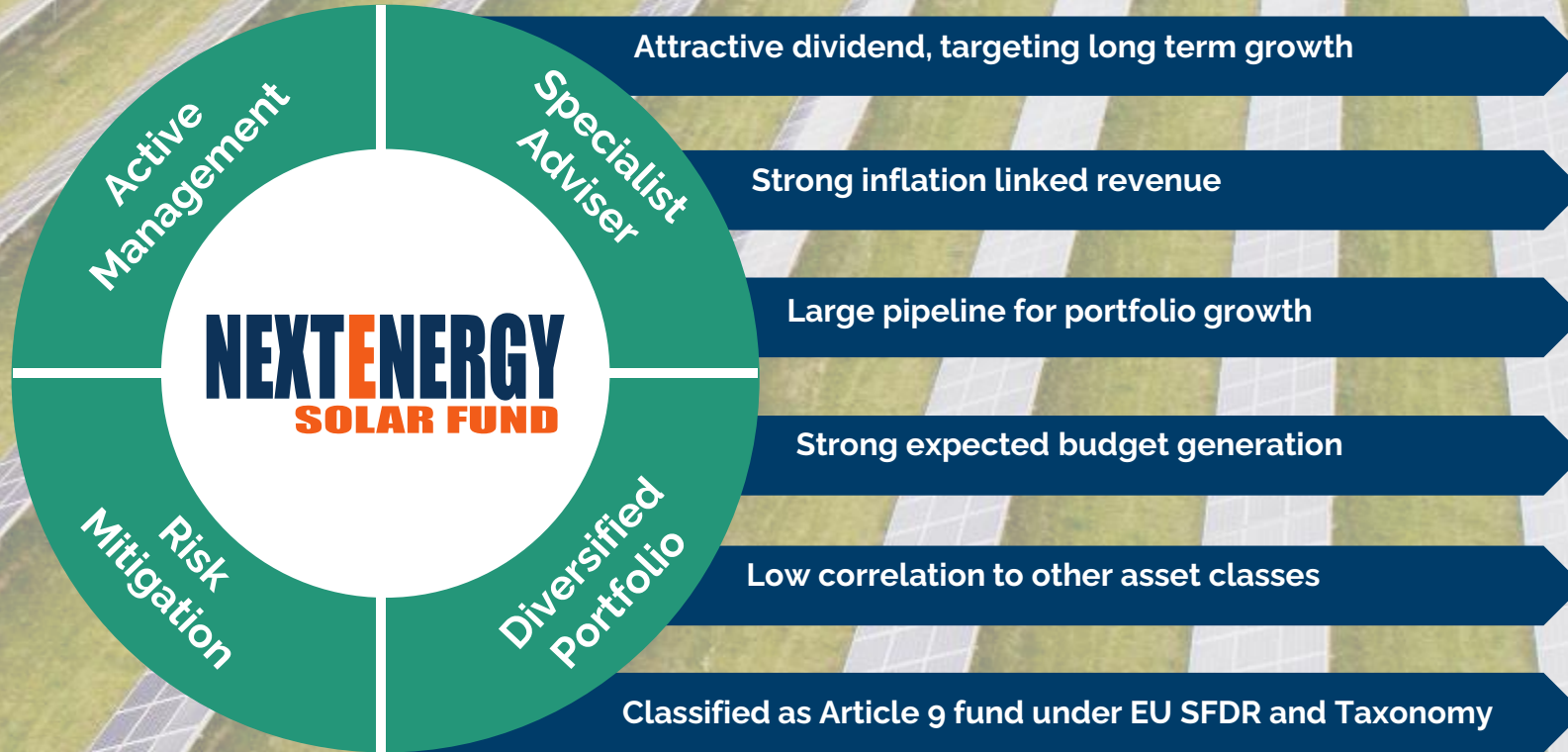
- >30 years' of multiple-sector experience with a focus on engineering, energy and finance. Jeremy currently serves as a non-executive director of NextEnergy Capital Investment Management Limited



Charlotte Denton

- >25 years' experience in the global private client wealth management sector. Charlotte currently serves as a non-executive director of NextEnergy Capital Investment Management Limited

Value accretive



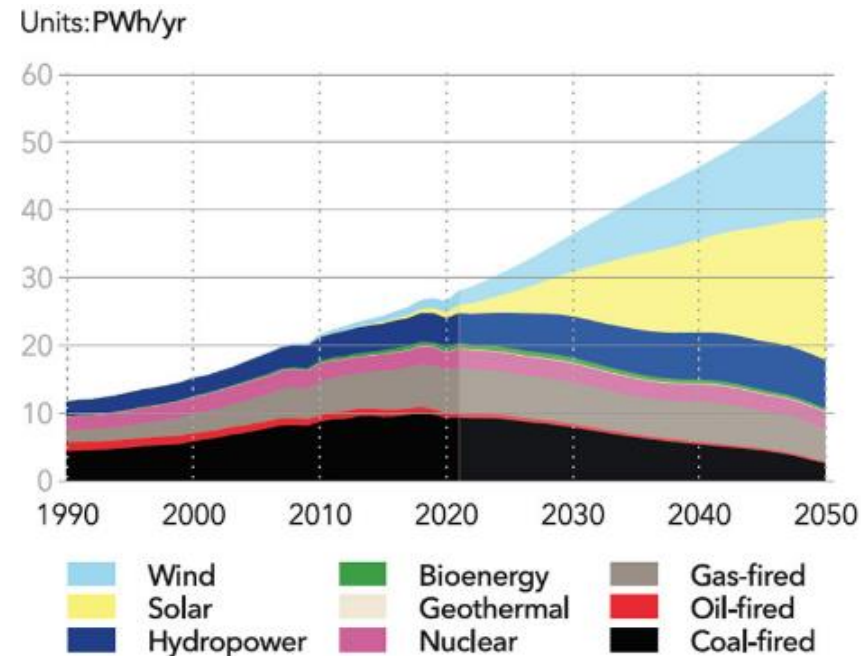
- A specialist renewable energy investment company focused on **solar and energy storage**
- Current **operating** portfolio includes **99** solar assets, in multiple jurisdictions, and **1** international solar infrastructure fund
- **865MW** capacity installed
- **7.52p** 2022/23 dividend target
- A fund that generates renewable energy, to help tackle climate change and lead the transition to a clean energy supply
- Managed by **NextEnergy Capital**, a specialist global solar investment manager and investment advisor



Solar growth potential

- It is expected that **\$900bn** is needed to be invested into solar energy in Europe for the continent to reach its net zero targets by 2050⁽¹⁾
- These graphs show solar is the leading renewable energy technology by 2050
- Solar LCOE⁽²⁾ has been in a continual decline over the course of the past decade, declining by **22%** since 2019, proving it is a cost leader over other generation technologies
- The continuous cost-competitiveness of solar is a leading reason for global governments integrating the technology as part of their plan in reaching net zero by 2050

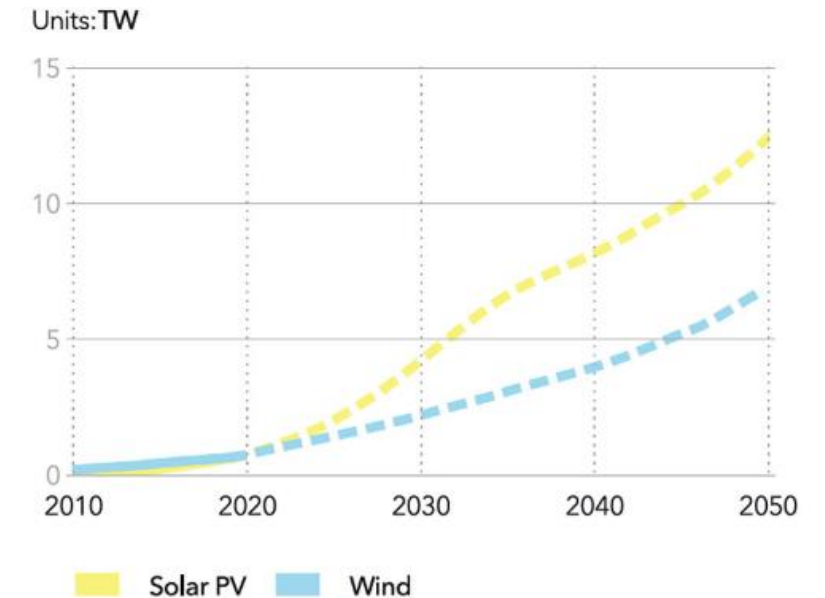
World Grid-Connected Electricity Generation by Power Station Type⁽³⁾



Notes:

- (1) Bloomberg BNEF
- (2) Levelised Cost of Electricity
- (3) DNVGL: Energy Transition outlook 2021

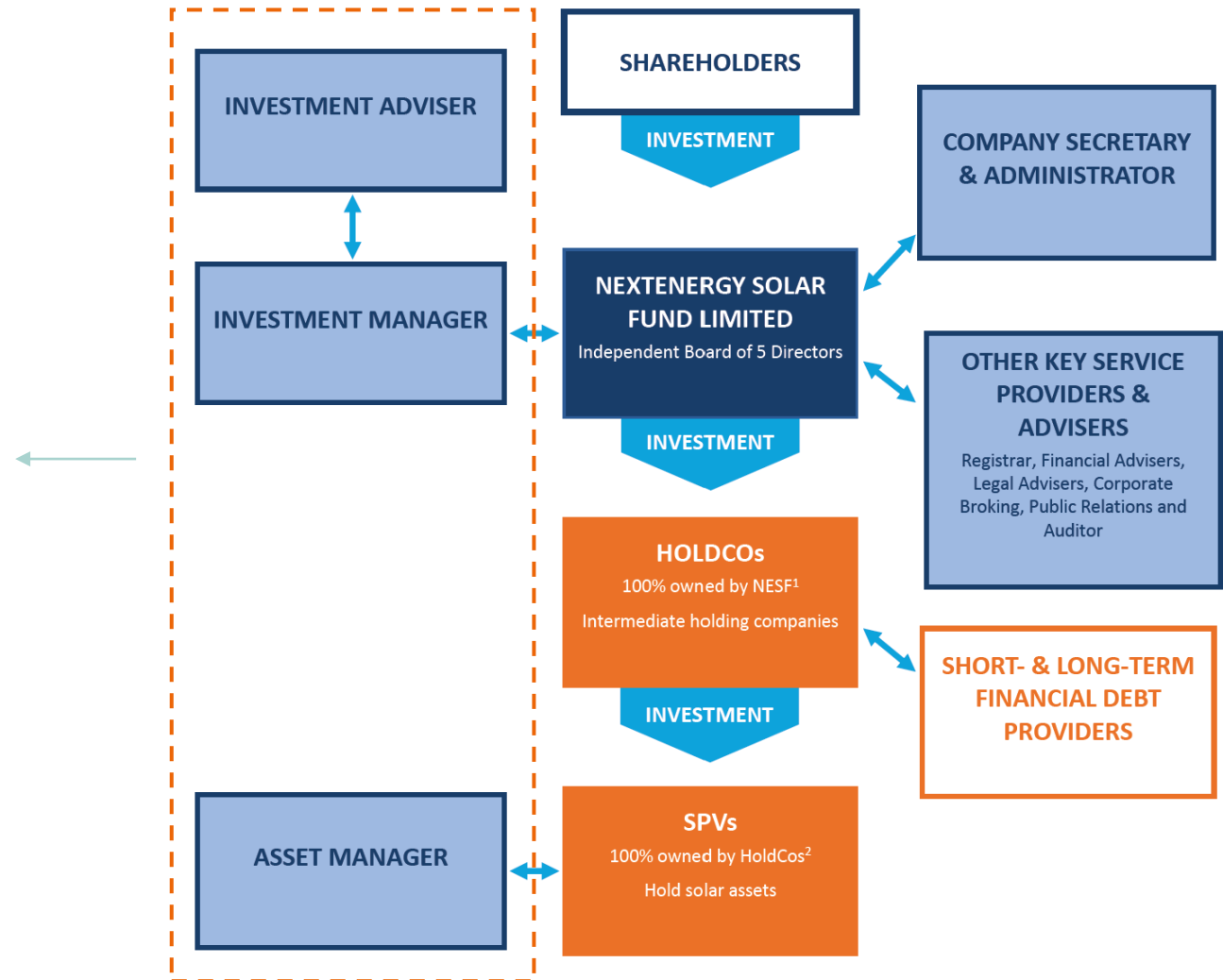
Build-up of Solar and Wind – Global Installed Capacity⁽³⁾



Notes:

- (1) Source: BloombergNEF
- (2) Source: BP energy outlook – central case

NextEnergy Solar Fund structure



Value add of WiseEnergy

WiseEnergy is NESF's operating asset manager

- WiseEnergy is a global solar asset manager part of the NextEnergy Group, with **over 11 years' experience monitoring and delivering operating optimisation and outperformance.**
- WiseEnergy oversees all elements of the solar asset's life from as early as the project construction phase up into the operational stage. Its dedicated global teams are split across the three main pillars of asset management: technical, commercial and financial, to deliver operating optimisation and outperformance. It does so through the following areas:



WiseEnergy consistently drives superior results through:

- Continuous investment in research and development and a long-term commitment to innovation
- A proprietary technology platform that delivers rapid and high-quality data driven insights and results, irrespective of asset size or location
- A leading commitment to ESG, including biodiversity

Key Facts

| | |
|-------------------------|--|
| Fund Structure | <ul style="list-style-type: none"> Guernsey-domiciled closed-end investment |
| Issue / Listing | <ul style="list-style-type: none"> Launched in 2014 Premium listing of ordinary shares on the London Stock Exchange Stock ticker code: NESF |
| Governance / Management | <ul style="list-style-type: none"> Board of Directors: 5 Independent Board Members Investment Manager: NextEnergy Capital IM Limited Investment Adviser: NextEnergy Capital Limited Operational Asset Manager: Wise Energy Limited |
| Ongoing charge | <ul style="list-style-type: none"> 1.1% as calculated by the aic: https://www.theaic.co.uk/companydata/0P00012KIL/charges |
| Investment Policy | <ul style="list-style-type: none"> 10% of GAV may be invested in standalone energy storage systems 15% of GAV may be invested in solar assets through private equity structures 30% of GAV may be invested in OECD countries outside the UK 3% of GAV may be invested in non-OECD countries 10% of GAV may constitute assets that are under development No single investment in any one asset will constitute more than 30% of GAV The four largest solar assets will not constitute more than 75% of GAV Leverage may not exceed 50% of GAV |
| Contact | <ul style="list-style-type: none"> Investor Relations: peter.hamid@nextenergycapital.com Website: www.nextenergysolarfund.com |

Important notice

This document is issued by NextEnergy Capital Limited ("NEC"), which is authorised and regulated by the UK Financial Conduct Authority ("FCA") with registered number 471192. The contents of this document are strictly private and confidential and accordingly may not be published, reproduced, copied, transmitted or disclosed to any third party.

This document is an advertisement and not a prospectus. Investors should not purchase or subscribe for any transferable securities referred to in this document except on the basis of information in the prospectus dated 10 November 2014 (and any supplement thereto) (the "Prospectus") published by NextEnergy Solar Fund Limited (the "Fund") in connection with its placing programme to issue up to 250,000,000 ordinary shares ("Ordinary Shares") and/or C shares, which will be admitted to the premium segment of the Official List of the Financial Conduct Authority (the "Official List") and to trading on London Stock Exchange plc's main market for listed securities (the "London Stock Exchange"), (together, "Admission"). A copy of the Prospectus is available from the Fund's website. This document is not an offer to sell, or a solicitation of an offer to acquire, securities in the United States or in any other jurisdiction. Neither this document nor any part of it shall form the basis of or be relied on in connection with or act as an inducement to enter into any contract or commitment whatsoever.

The information contained in this document has been prepared in good faith but it is subject to updating, amendment, verification and completion. This document and any terms used herein are a broad outline of the Fund only and are furnished on a confidential basis for the purpose of evaluating a potential investment in the Fund. This document is designed solely to assist exploratory discussions with a limited number of potential investors. Recipients of this document who intend to purchase or subscribe for shares in the Fund are reminded that any purchase or subscription must be made solely on the basis of the information contained in the Prospectus.

None of the Fund, NEC, Cenkos Securities, RBC Capital Markets, Shore Capital and Corporate Limited or Shore Capital Stockbrokers Limited or any of their respective directors, officers, employees, agents or advisers or any other person makes any representation, warranty or undertaking express or implied, as to the accuracy or completeness of the contents of this document, which has been prepared for background purposes. In particular, but without prejudice to the generality of the foregoing, past performance is no guarantee of and may not be indicative for future results and no representation or warranty is given as to the achievement or reasonableness of, and no reliance should be placed on, any assumptions, targets, forecasts, projections, estimates or prospects with regard to the anticipated future performance of the Fund or any other information herein. No responsibility or liability is accepted by any such person for the occurring or completeness of the contents of the document or for any errors, misstatements or omissions herein. The exclusion set out in this paragraph do not extent to an exclusion of liability for, or remedy in respect of, fraudulent misrepresentation.

The Fund is incorporated in Guernsey, Channel Islands and is a registered closed-ended investment scheme under the Protection of Investors (Bailiwick of Guernsey) Law, 1987, and the Registered Collective Investment Scheme Rules 2008. The Fund is not an Authorised Person under the UK Financial Services and Markets Act 2000 ("FSMA") and, accordingly, will not be registered with the FCA. The Fund will therefore only be suitable for professional or experienced investors, or those who have taken financial advice. Regulatory requirements which may be deemed necessary for the protection of retail or inexperienced investors do not apply to listed funds. By investing in the Fund you will be deemed to be acknowledging that you are a professional or experienced investor or have taken appropriate professional advice and accept the reduced requirements accordingly. You are wholly responsible for ensuring that all aspects of the Fund are acceptable to you. Investment in listed funds may involve special risks that could lead to a loss of all or a substantial portion of such investment. Unless you fully understand and accept the nature of the Fund and the potential risks associated with investing in it, you should not invest in the Fund.

An investment in the Fund will be suitable only for sophisticated investors who fully understand and are willing to accept high risks and lack of liquidity involved in the Fund's investment strategy. The Fund's investment practices, by their nature, may be considered to involve a high degree of risk.

No information contained herein constitutes an offer, a solicitation or invitation to make an offer or recommendation, to acquire or dispose of interests in the Fund or other investment instruments, nor to effect any transaction, or to conclude any legal act of any kind whatsoever. Nothing contained herein constitutes financial, legal, tax, investment or other advice, nor should any investment or any other decisions be made solely based on the information set out herein.

The interests in and documents constituting the Fund are not the subject of any filing with, nor have the interests been approved or disapproved by, any governmental agency, regulatory authority or any national securities exchange. Accordingly, such interests in and documents constituting the Fund shall not be registered under the securities laws of any jurisdiction, other than as required to qualify for exemptions from supervision, registration, prospectus and reporting requirements of such laws. The Fund and its management entity shall not be supervised, regulated or passed upon by any securities or investments regulatory body.

The information provided is confidential, for personal use and for informational purposes only, subject to changes without notice. It is not to be reproduced, duplicated, distributed, transmitted or used in whole or in part for any other purpose by any recipient hereof. Any recipient acting in the capacity of a discretionary investment manager must not distribute or transmit the whole or any part of this document to any of its clients or other third parties. Accordingly, no person has been authorised to give any information or to make any statement regarding the Fund other than which is contained herein and, if given or made, such information or statement must not be relied upon as having been authorised.

The Fund has limited investment and trading history. Results can be positively or negatively affected by market conditions beyond the control of the Fund or any other person. The returns set out in this document are targets only. There is no guarantee that any returns set out in this document can be achieved or can be continued if achieved, nor that the Fund will make any distributions. There may be other additional risks, uncertainties and factors that could cause the returns generated by the Fund to be materially lower than the returns set out in this document.

This document may include "forward-looking statements". All statements other than statements of historical facts included in this document, including, without limitation, those regarding the Fund's financial position, business strategy, plans and objectives of management for future operations (including development plans and objectives relating to the Fund's investments) are forward-looking statements. Forward-looking statements are subject to risks and uncertainties and accordingly the Fund's actual future financial results and operational performance may differ materially from the results and performance expressed in, or implied by, the statements. These factors include but are not limited to those described in the Prospectus. These forward-looking statements speak only as at the date of this document. The Fund and NEC expressly disclaim any obligation or undertaking to update or revise any forward-looking statements contained herein to reflect actual results or any change in the assumptions, conditions or circumstances on which any such statements are based unless required to do so by FSMA, the Rules of the Financial Conduct Authority or other applicable laws, regulations or rules.